


Monthly report – 31 August 2010
ORIENTATION AND OBJECTIVE

Sextant Peak Oil is an international equities fund. It is concentrated in a selection of securities benefiting from the rarefaction of the world's petroleum resources. Besides traditional oil companies, it can also be invested in alternative energies.

Portfolio						
	31/08/2010	30/07/2010	30/06/2010	31/05/2010	30/04/2010	31/03/2010
Net asset value	78,14 €	79,67 €	72,03 €	75,50 €	82,23 €	80,27 €
Net assets	11 M€	11,32 M€	10,70 M€	11,35 M€	11,02 M€	10,79 M€
Number of securities*	19	20	20	20	21	21
Monthly performance	-1,92%	10,61%	-4,60%	-8,18%	2,44%	4,55%

* Excluding monetary instruments and derivatives products

ISIN code:
FR0010547869

Classification AMF:
International equities.

Tax treatment:
Not eligible for PEA

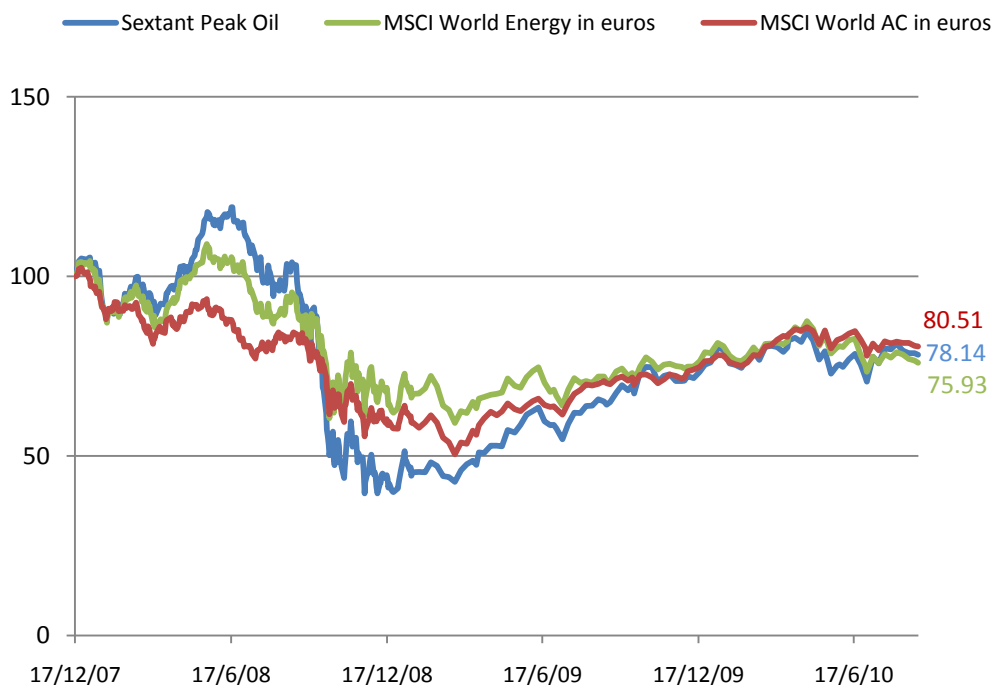
Recommended investment horizon:
More than 5 years

Subscription and redemption conditions:
Orders are centralized with the custodian every Friday until 10 am, and are executed using the next calculated net asset value, at unknown price.

Net asset value:
Calculated every Monday using Friday's closing prices.

Subscriptions fees: 2%
Redemption fees: 1%
Management fees :
- **Fixed portion :** 2.4% per year (tax included)
- **Performance fees:** 15% of the fund's return above 5%

Custodian :
RBC Dexia Investors
Services Bank France



* Start date 17 December 2007

The index excludes dividends while the fund only propose capitalization shares

Net performances calculated after management fees, in Euros, weekly data 100 = 17 December 2007.

Warning : The performance data featured represents past performance, which is no guarantee of future results. Investment return and principal value of an investment will fluctuate; therefore, you may have a gain or a loss when you sell your shares.

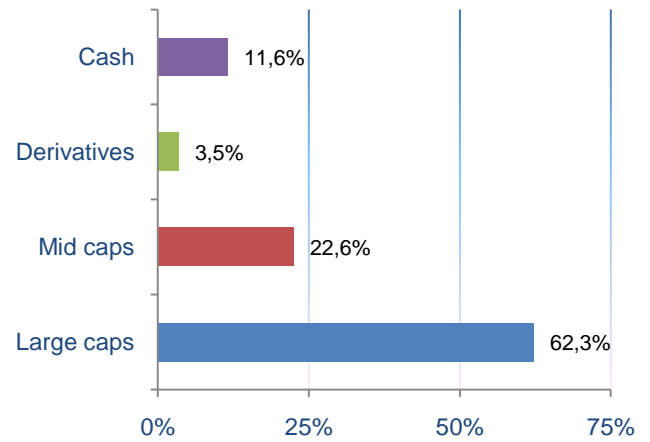
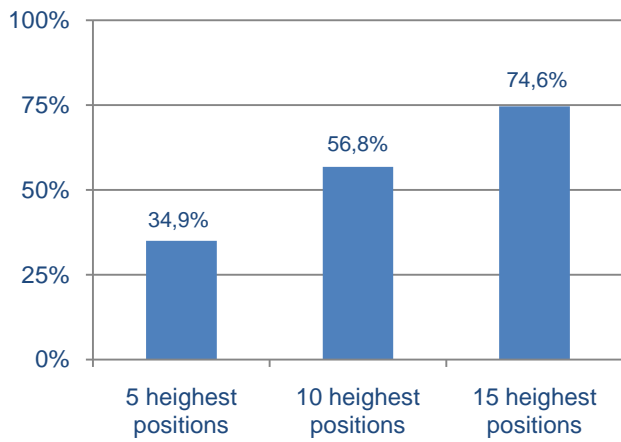
Performances					
	1 year	2 years	2010	2009	2008
Sextant Peak Oil	21,58%	-24,23%	2,80%	73,18%	-57,92%
MSCI World AC (in Euros)	14,65%	-4,62%	5,26%	28,04%	-40,99%
MSCI World AC Energy (in Euros)	7,11%	-19,93%	-3,41%	19,64%	-36,61%

This commercial document aims to present in a simplified manner the principal characteristics of the fund. For further information, you may refer to the fund's prospectus, an official legal document.

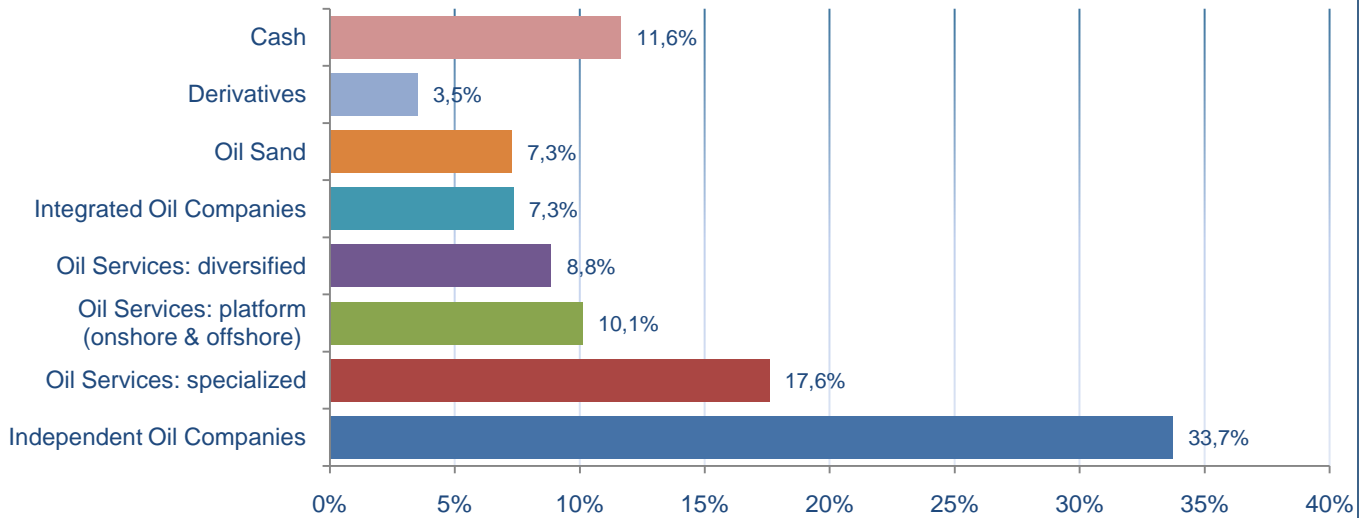


Monthly report – 31 August 2010

Wheight of the highest positions



Sectorial asset allocation



Geographical asset allocation

