



Monthly report – 31 August 2010

Orientation and objective

Sextant Autour du Monde is an actively managed fund whose objective is to maximize performance through a selection of international equities, without referring to an index.

Portfolio						
	31/08/2010	30/07/2010	30/06/2010	31/05/2010	30/04/2010	31/03/2010
Net asset value	104,17 €	104,96 €	100,01 €	102,92 €	108,36 €	107,51 €
Net assets	114,59 M€	113,84 M€	115,72 M€	117,17 M€	126,50 M€	124,85 M€
Number of securities*	42	40	46	43	44	44
Historical 1 year volatility	17,06%	17,30%	15,77%	16,25%	14,14%	16,51%
Monthly performance	-0,75%	4,95%	-2,83%	-5,02%	0,79%	3,25%

* Excluding monetary instruments and derivatives products

ISIN Code:

FR0010286021

Classification AMF:

International equities

Tax treatment:

Not eligible for PEA

Recommended investment

horizon :

More than 5 years

Subscription and redemption conditions:

Orders are centralized with the custodian every day until 10 am, and are executed using the next calculated net asset value, at unknown price.

Net asset value :

Daily, using closing prices.

Subscriptions fees : 2%

Redemption fees : 1%

Management fees :

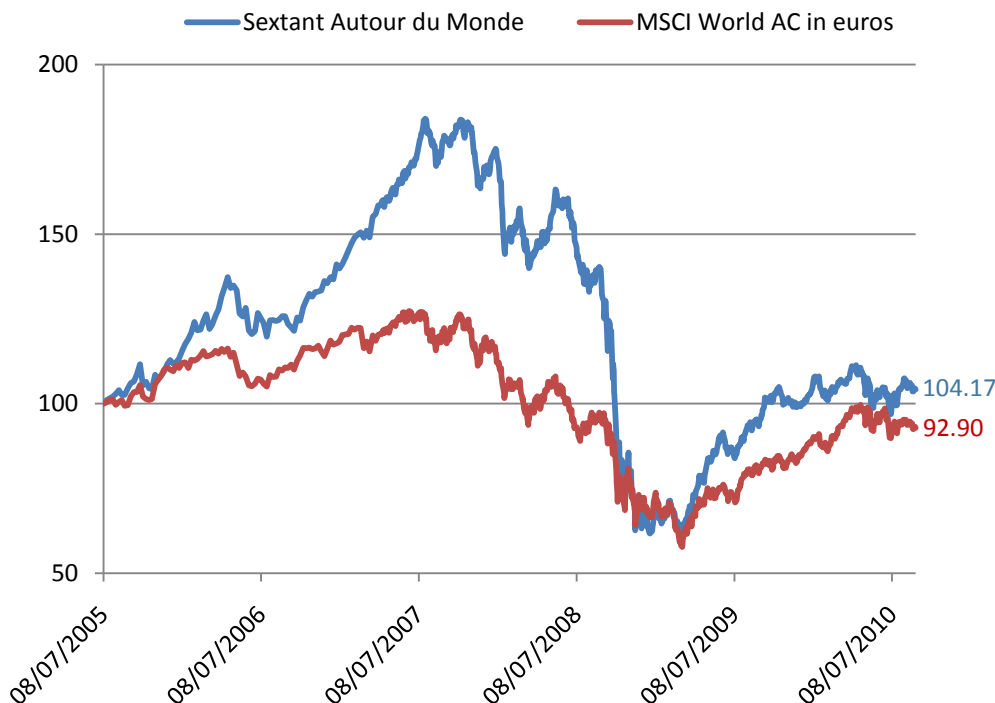
- Fixed portion : 2.4% per year tax included

- Performance fees: 15% of the fund's return above 5%.

Custodian :

RBC Dexia Investors

Services Bank France



* Start date 8 July 2005

The index excludes dividends, while fund only proposes capitalization shares..

Warning: The performance data featured represents past performance, which is no guarantee of future results. Investment return and principal value of an investment will fluctuate; therefore, you may have a gain or a loss when you sell your shares.

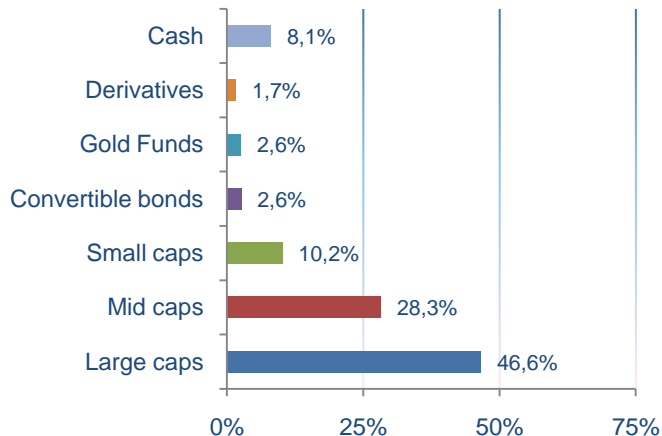
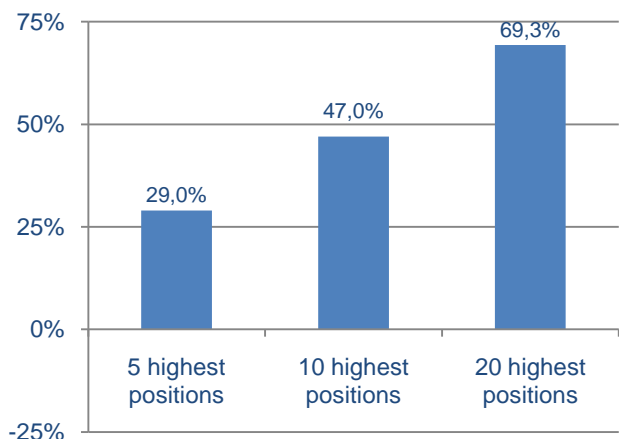
Performances								
	1 year	3 years	2010	2009	2008	2007	2006	2005*
Sextant Autour du Monde	9,95%	-41,15%	1,04%	59,20%	-62,95%	23,90%	24,48%	13,33%
MSCI AC Converted in euros	14,66%	-23,39%	5,26%	28,04%	-40,99%	-0,84%	6,57%	10,53%

This commercial document aims to present in a simplified manner the principal characteristics of the fund. For further information, you may refer to the fund's prospectus, an official legal document.

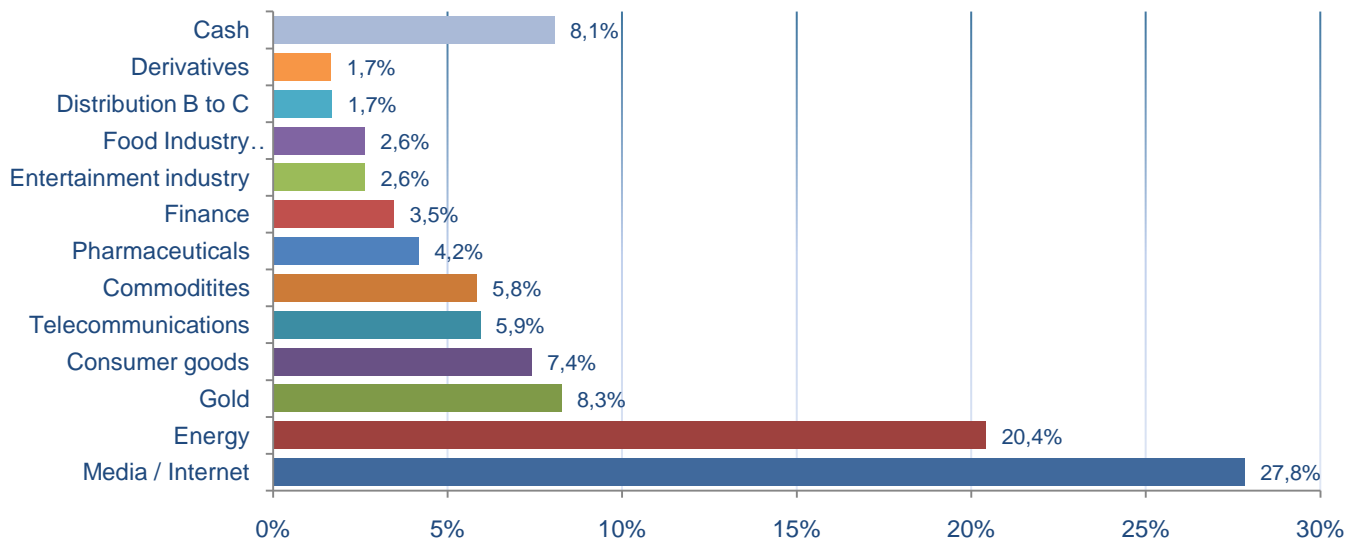


Monthly report – 31 August 2010

Wheight of the highest positions



Sectorial asset allocation



Geographical asset allocation

